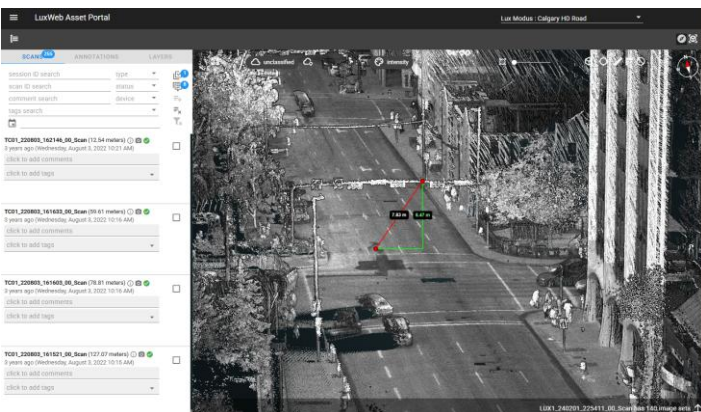


Data collection program managed in LuxWeb



3D point cloud visualized in LuxWeb

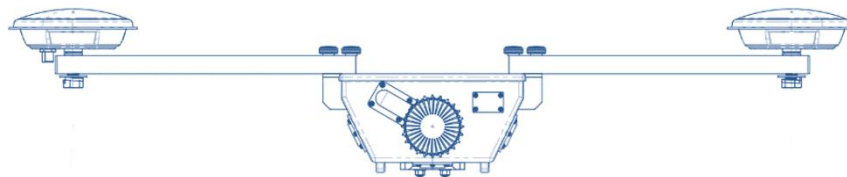
LuxWeb – your personal or enterprise 3D and 4D visualization solution

Geospatial data comes from many sources – drones and aerial collection, surveyors, field data collectors of all kinds, and of course Lux Modus!

To support our customers using our LuxGear collection platform, we developed LuxWeb, our advanced, 3D web mapping service. But you don't need to be a LuxGear user to realize the benefits of LuxWeb.

The LuxWeb platform :

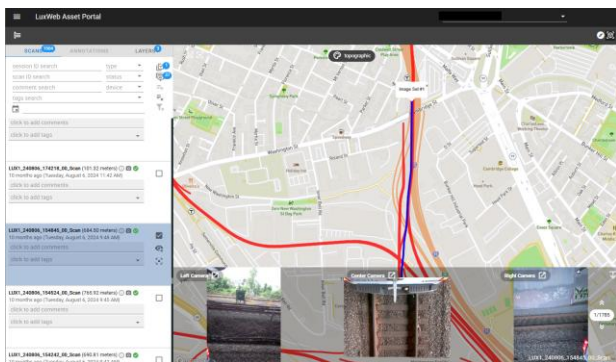
- Visualize and interrogate LiDAR, imagery and GIS data in 2D and 3D.
- Load multiple LiDAR datasets together to view changes over time (4D LiDAR).
- Publish data to other system and users.
- Secure, private and enterprise wide.
- Monthly or yearly subscriptions.
- Not-for-profit and student rates.
- 360° spherical imagery and video enabled.



A 3D Digital Twin is more than point clouds and images. It's GIS and CAD data, ready to be consumed via web maps and desktop or enterprise geospatial systems.



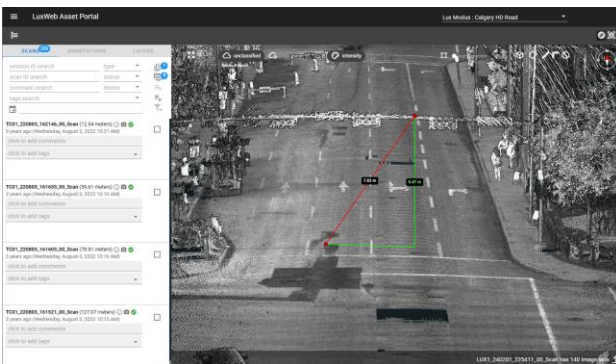
Create or update your asset inventory with 3D CAD and GIS data extracted from survey-grade, high-density LiDAR and ultra high-resolution imagery.



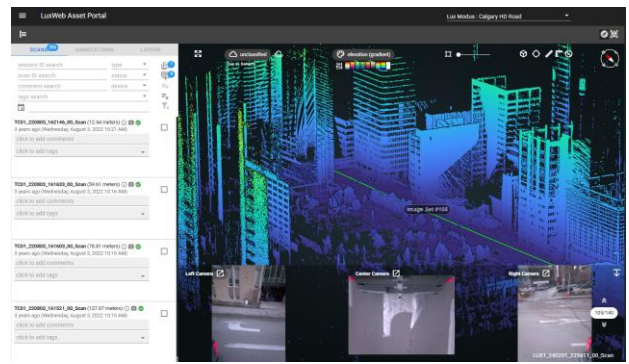
Commuter rail data collection program



3D measurements of LiDAR



3D clearance analysis from LiDAR



Curb management collection program